

### SPECIAL AMENITIES

- MODULAR KITCHEN OTTA.
- 5 PASSENGER LIFT.
- POWDER COATED ALUMINIUM WINDOW.
- POP IN HALL & BEDROOM.
- PARKING** : AMPLE COVERED PARKING SPACE.
- WATER PROFFING** : SPECIAL WATER PROFFING TREATMENT TO TOILETS & TOP TERRACE.

### NOTES

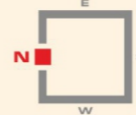
- Stamp duty Registration charges Legal Fees & other Expenses Shall be Paid by Purchaser.
- Electric / Meter Deposit, Water Connection Charges, Society Charges & any other Future or Present Govt. Charges/Taxes shall be Paid by Purchaser.
- Any Extra Work shall be Charged Separated before Execution.



LOCATION MAP



2 BHK LUXURIOUS FLAT



**SITE**: PLOT NO. 16, MAYUR PETH, ARADHANA NAGAR, NEAR SIDDHESHWAR NAGAR, KHARABI RING ROAD, DIGHORI, NAGPUR-24

### CONTACT FOR BOOKING

ER. AVINASH BALPANDE

☎ : 9860452024

ER. SATISH DHOK

☎ : 8055056777

### CREDIT

ARCHITECT

AR. RAVI JANGID

STRUCTURAL CONSULTANT

ER. NIMISH PATANKR

A PROJECT BY



📍 : Office 35, Mire Layout, Gurudev Nagar Road, Nandanvan, Nagpur - 440024.

✉ : silicateinfrastructure@gmail.com

\*THE BROCHURE IS NOT LEGAL DOCUMENT. IT IS ONLY FOR CONCEPTUAL PURPOSE. BUILDER RESERVE RIGHTS TO ADD, DELETE, OR ALTER THE ABOVE SPECIFICATION & PLANS AS DEEMED FIT.

# साई दर्शन HEIGHTS

## 2 BHK LUXURIOUS FLAT

...WE CONVERT  
YOUR DREAMS INTO REALITY...







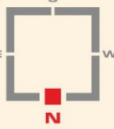
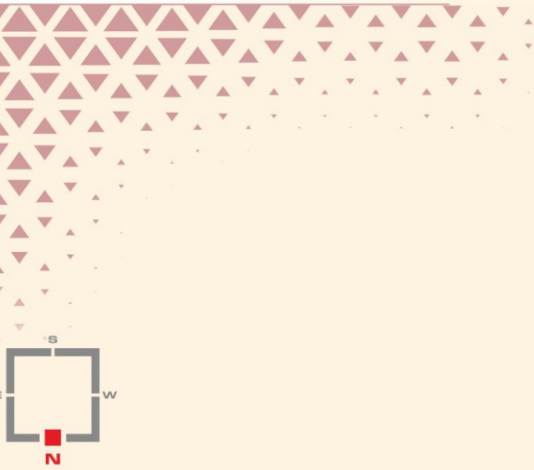
## GROUND PARKING FLOOR PLAN



## 2 BHK LUXURIOUS FLATS ISO VIEW

101/201/301/401/501/601/701  
S/B AREA = 1010 - SQ.FT

## TYPICAL 1ST TO 7TH FLOOR PLAN



### SPECIFICATION: ▾

#### STRUCTURAL SYSTEM

- Earthquake Resistance R.C.C. Frame Structure In High Strength Cement Of Reputed Company And TMT Steel.

#### WALLS

- External Walls: 230mm/150mm Thick.
- Internal Walls: 115mm Thick.

#### PLASTER

- 12mm Thick Smooth Plain Plaster Finish.
- Architectural Finish & Sand Face Cement Plaster In Exterior

#### DOORS

- Wooden Finish Decorative Front Door With Safety Door.
- All Internal Doors Frame In RCC Frame And Wooden Flush Doors.

#### WINDOWS

- Two-Track Powder Coated Windows.
- M.S. Safety Grille For Windows.

#### FLOORING

- Double Charged Verified Tiles In Entire Flat .
- Anti Skid Tiles (400mm X 400mm)in Wash Area.

#### KITCHEN

- Granite Kitchen Platform With Stainless Steel Sink.
- Glazed Tile Dado Above Platform Up To 4'0" Height.
- Provision For Aqua Guard Connection.

#### WASH & DRY BALCONY

- Arrangement Of Taps.
- Anti Skid Tile (400mm X 400mm) Vitrified Tiles .

#### TOILETS

- Waterproofing In All Toilets.
- Glazed Tile Wall Cladding Up To Ceiling Level .
- Sanitary Ware Of Standard Brands Bell / Jaquar essco / Cera.
- Pipe Fitting of superior brand Astral / Supreme/ plasto
- CP Fitting Of Superior Brands Jaquar / Parryware / Cera
- Provision Of Geyser Point & Provision Of Exhaust Fan In All Toilets.

#### ELECTRIFICATION

- Polycab /finolex /anchor Wire Will Be Used. Modular Switches Of Anchor Make. All Points In Concealed Copper Wiring With Circuit Breakers. Cable T.v. Point In Living Room & Bed Room.
- AC Point in Living & Bed Room

#### WATER SUPPLY

- Corporation And Ground Water Through Sump And Overhead Tank
- Bore-well/ Open Well For Back Up Supply.

#### PAINTING

- Premium Plastic Paint For Interior, Apex Paint For The Exterior.

#### LIFT

- 5 Passenger Lift Of Superior Range Jonnson / ECE